

BOURNEMOUTH MODEL RAILWAY EXHIBITION 2026



**SATURDAY 14TH FEBRUARY 2026
10AM - 5PM
&
SUNDAY 15TH FEBRUARY 2026
10AM - 4PM**

www.bmre.org.uk

**KINSON COMMUNITY CENTRE
Pelhams Park, Milhams Road, Kinson BH10 7LH**

Organised by The East Dorset N Gauge Group

Welcome to the Bournemouth Model Railway Exhibition

We are delighted to welcome you to our new Exhibition venue at Kinson Community Centre.

This move marks an exciting new chapter for the exhibition. Kinson Community Centre has long been the home of our club nights, and we are proud that it is now also the home of our exhibitions. Since last year, Mark Stanway has taken on the role of Exhibition Manager. Mark has brought fresh ideas and renewed energy to the event, helping to build on its success, and we look forward to many more years of exhibitions under his leadership.

The Bournemouth Model Railway Exhibition has grown to become one of the most popular model railway exhibitions on the south coast, featuring standout layouts from near and far, alongside excellent trade support in attendance.

We sincerely hope you enjoy today's exhibition. If you have any suggestions or feedback, please feel free to speak to one of the club members.

All the best from
Bournemouth Model Railway Exhibition Team.



Julie



Mark



Duncan



Candid Wedding Photography



Nervous about being in front of the camera?

Real moments, real emotions

Just you and your love story; naturally

From £500



YOUR WEDDING DAY, NOT A PHOTOSHOOT



kellytawsephotography@gmail.com

www.kellytawsephotography.co.uk

QUOTE W126 to get a free audio guest book (T&Cs apply)



Passionate about
fishkeeping, dedicated to
service



3 Kings Court, Wimborne,
BH21 1HS

01202 883065

www.fishcove.co.uk

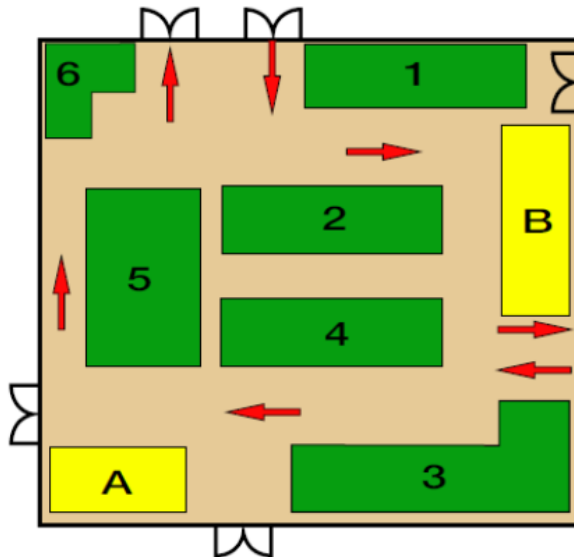
Store Open Tuesday, Thursday to Sunday

Closed Monday and Wednesday

Aquarium Maintenance straight to your door!
One off installs, re-scapes, full service and health
checks also available



Rooms 1 and 2



Layouts

1. Croscombe
2. Lisworth Bay
3. Awrevice Diesel Depot
4. Brewery Lane
5. Karlisle
6. Moor Boxes

Traders

- A. John Sutton
B. Jake Weller

1) Croscombe,

Owner – Marchwood Modellers

Size – 18ft x 2ft, O-Gauge

Croscombe is set at the end of an imaginary Great Western Railway branch line. Had it been built, it would have come off the Cheddar Valley line half way between Shepton Mallet and Wells in Somerset. It depicts a typical post-war GWR branch line terminus station with a small goods yard and creamery. The trains are mainly short passenger with the occasional goods.

2) Lisworth Bay

Owner – John Spence

Size – 20ft x 6ft, N-Gauge

The London and South Western Railway forged its way south-west during the railway age of the 19th Century, sprouting branches to coastal towns on its way; Lisworth Bay was one of these. Trains are typical of those seen on the region, local passenger and express workings, freight, parcels, newspaper and milk traffic. The whole branch to Lisworth Bay, was condemned to be closed as part of the Beeching Report and trains last ran in the early autumn of 1966.

3) Awreville Diesel Depot

Owner – Tom Pinnell

Size – 10ft x 25ft, O-Gauge DCC

Awreville O gauge Diesel depot is a fictional layout based in the 1990s running rail freight liveried locomotives. The layout depicts an older depot being updated to run newer locomotives with the inclusion of updated / new depot buildings and infrastructure. The layout is DCC controlled and runs automation via iTrain. Locomotives are sound fitted and the software runs routines throughout the day.

4) Brewery Lane

Owner – Kenneth Banks

Size – 20ft x 6ft, O-Gauge

Brewery Lane is a fictitious 'O' gauge layout based in the south Somerset area.

The site had a brewery from about the 1820's till it closed around 1930. The brewery supplied beers and ales to pubs in the surrounding area and beyond. Being near the railway they made use of a rail connection.

When the brewery closed, the Southern Railway bought the site and built a 60ft turntable and engine sheds, using the old buildings for offices and stores.

5) Karlisle

Owner – Mike Banks

Size – 16ftx10ft N Gauge DCC

This 12 year 'project to date' depicts a close representation of the West Coast Mainline in 2mm N Gauge, incorporating the exact track plan to the southern approaches to Carlisle Citadel platforms, featuring the south junction with the Hexham/Newcastle & Settle to Leeds (S&C). The electrified mainline climbing up towards Penrith with the steep gradients of Shap and the Maryport and Workington (M&C) – Cumbrian Coastline. Karlisle captures a screenshot of the late 80's early 90's

6) Moor Boxes

Owner – Kevin Staden

Size – approx 15 Box File layouts

Each box is a completely separate scene, with some linked together only by a railway.

You will see Farms, villages, a quarry, an alpine scene, mills and factories, a harbour, a beach scene and much more.

Each box has many small details to be found.

Thunderbolt Models

New & Preowned
Rolling Stock
Track

Accessories
Scenery
Verbal Abuse Extra

sales@thunderboltmodelsltd.com
www.thunderboltmodel.shop

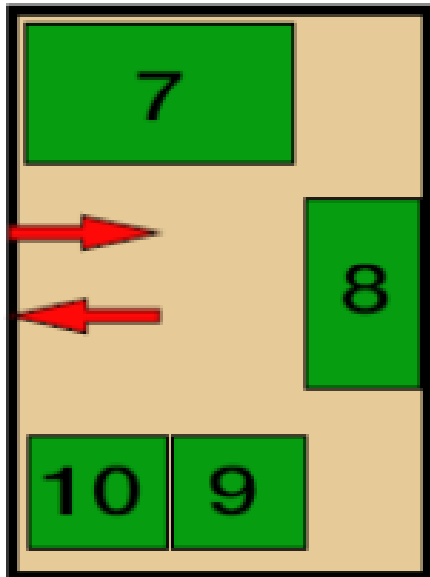
10%

07851731629

Rooms 1 and 2

Layouts

- 7. Goathorn
- 8. Rheilfford Wraniwm
- 9. Autenbak
- 10. Box Metals



7) Goathorn

Owner – Peter Hollins

Size – 12ft x 2ft 7mm Fine

Goathorn peninsular is situated on the south west side of Poole Harbour, and was the point where ball clay from Benjamin Fayles mines was trans-shipped from the Company's own 3' 9" gauge tramway, to ships berthed at the end of the pier. Fayle's tramway and Pike Brothers tramway are now being reborn in the form of a clay Mining Museum at Norden Station on the Swanage Railway.

8) Rheilfford Wraniwm

Owner – Daniel Nutbeam

Size – 8ft x 4ft Gauge - 009

Rheilfford Wraniwm is a fictional mining railway situated in North Wales, primarily servicing Rhydymwyn valley works. The layout is about 25 years old now but Daniel is also changing and upgrading the layout.

9) Autenbak

Owner – Paul Corkrum

Size – 6ft x 1ft HO- Gauge

A micro-layout (under 4 square feet) and is an automated shuttle with a “tuning fork” track plan, with 2 trains leaving and returning alternately from a 2 platform terminus under control of a Heathcote shuttle module. Trains are normally examples from German Epoch 3 or 4 from various manufacturers and the location is entirely fictional

10) Box Metals

Owner – Paul Corkrum

Size – 40ft x 8ft OO- Gauge

This micro (under 4 Square feet) layout was originally built by Colin Peake in 2008 and has featured in a number of publications. It features the classic 3 track inglenook design condensed into a box file. Location is a scrap yard in the Sheffield area and stock is BR Blue period with Class 08's, and 16T mineral wagons using Kadee couplings and DC control .

THE MOLE HUT

**OPEN MON - FRI
8AM - 2:30PM**

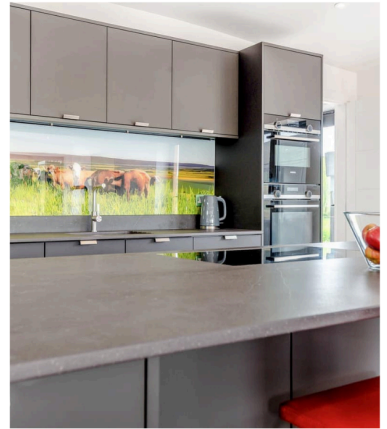
BURGERS - WRAPS - BAPS - SANDWICHES
TEA - COFFEE - COLD DRINKS

**51 HOLTON RD, HOLTON HEATH IND EST,
POOLE, DORSET, BH16 6LT**

 themolehut@icloud.com TEL:07580 330680



THE DAIRY



HOLIDAY LET - THE DAIRY, MANNINGTON

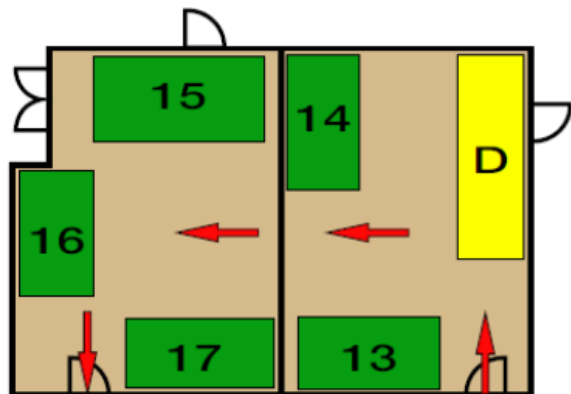
Experience contemporary luxury at The Dairy, a stunning one-floor barn conversion set in 9.5 acres in the tranquil hamlet of Mannington, Dorset.

- 3 ensuite bedrooms - sleep 6
- open-plan living area
- 15 minutes from the New Forest

Whether you're watching deer and pheasants in the garden or enjoying scenic walks through nearby Holt Heath, The Dairy offers a peaceful and stylish base for an unforgettable countryside escape.

WWW.COTTAGES.COM/COTTAGES/THE-DAIRY-UK47121

Rooms 3 and 4



Layouts

- 13. Sturminster Newton
- 14. Feorag
- 15. White Meadow Quarry
- 16. Modbury
- 17. Carlyon Dock

Trader

D. Tim Drew

13) Struminster Newton

Owner – Gavin Collins

Size – 11ft x 6ft N - Gauge DCC

An N gauge layout based on Sturminster Newton in Dorset on the Somerset and Dorset line as it was before closure in 1966. The S&D here was single line but expanded in the station with an up and down line with platforms, goods loop and a busy cattle market serving the goods yard. The layout is DCC controlled with a laptop running JMRI used for point and route control. The rolling stock is prototypical for the line and period, weathered with the occasional sound fitted visitor.

14) Feorag

Owner – Chris Odell

Size – 11ft x 3ft 009- gauge (4mm scale narrow gauge)

Feòrag is the first module constructed representing the railways of the Glynch & Rathmor Railway Ltd. Glynch and Rathmor are two islands situated in the Atlantic west of Cornwall and south of Ireland. Rathmor is rich in minerals, Glynch is more farmlands. Ruadh as it was called by early inhabitants. A newer line to the coast has recently been opened from Feòrag now that the new Glen Feorag Viaduct has opened, saving considerable time and an easier gradient.

15) White Meadow Quarry

Owner – Anna and Ray

Size – 220cm 122cm N - Gauge

Set around 1966 (ERA 5) White Meadow Quarry is an n gauge model railway layout set in a fictitious location somewhere in the South of England. Located a little way outside the village of White Meadow, the railway serves a chalk quarry as well as the village. At the time of the layout, the chalk quarry is coming to the end of its life and is very run-down – almost derelict. A main line station sees fairly regular rail traffic, while the branch line brings materials into and out of the chalk quarry as needed. The quarry workers keep the local pub going – although today it's doing a roaring trade because there's a Bus Rally taking place on the common near the station

16) Modbury

Owner – Ian Smith

Size – 10ft x 2ft Gauge - 2mm finescale

In my imagination, the South Devon Railway built the Exeter to Plymouth line to their initial plans as a single track line built to Brunel's Broad Gauge, and along with other stations along the line provided a two platform passing place at Modbury. After the South Devon was absorbed into the GWR in the 1870's, the latter company built the more direct Newton Abbot to Plymouth line skirting the southern reaches of Dartmoor leaving my imaginary route as little more than cross country branch. It is assumed that the original South Devon line would have been built as Brunel's Baulk Road, which would have been "narrowed" along with the rest of the remaining Broad Gauge on that fateful weekend in May 1892. My model is set some 14 years after the gauge conversion, and it is in that narrowed form that I am modelling my track work

17) Carlyon Dock

Owner – Andrew Keast and Mick House

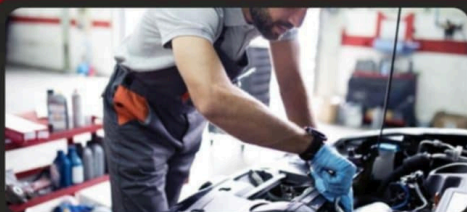
Size – 1f2t x 2.6ft 00- Gauge

Carlyon Dock is a fictitious layout loosely based on the entrance to Par Docks in Cornwall. The railway provides facilities for the transport of dried and slurry china clay to the docks at Fowey and Par, the Potteries and Scottish paper mills. The small branch terminus serves the dockworkers as well as the patrons of the luxury hotel at Carlyon Bay.



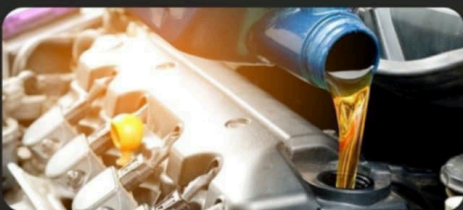
**SPECIAL
OFFERS**

QUALITY SERVICE EVERY TIME!



FULL SERVICE

£10 OFF



OIL CHANGE

£10 OFF



**ENGINE
DIAGNOSTICS**

£10 OFF



BOOK TODAY

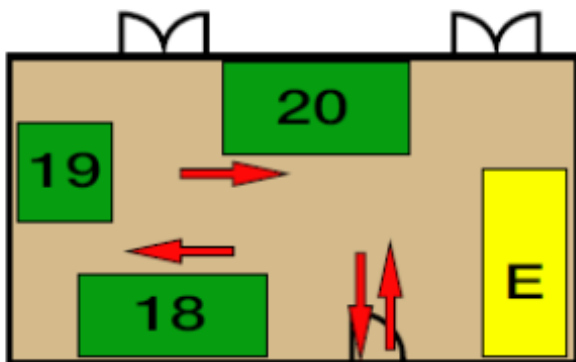


☎ 01202 748581 📍 20a Mannings Heath Road Poole BH12 4NQ

Room 5

Layouts

- 18. Penworth
- 19. Bowcombe
- 20. Bristol Harbour



Trader

E. Thunderbolt Models

18) Penworth,

Owner – Mark Butler

Size – 9ft x 2ft, Controller - DC (N gauge)

Penworth is a Pendonesque GWR branch line terminus in N gauge. The layout has been built to show that similar standards as those to be seen at Pendon Museum could be achieved in 2mm. The buildings are scratch built copies of buildings on Pendon's Vale Scene but scaled down to 2mm.

19) Bowcombe,

Owner – Nick Arthur

Size – 6ft x 2ft, 009- Gauge

Bowcombe is a fictional station set in the 1930's of South Devon connecting the town of Kingsbridge to Slapton Sands. The layout features a through station with goods sidings serving the local village of Bowcombe. Although fictional the area would have been just right for a narrow gauge line to take tourists down to Slapton Sands as well as collecting marble, quarry stone, oak and grain all produced within the area..

20) Bristol Harbour,

Owner – Bob Edwards

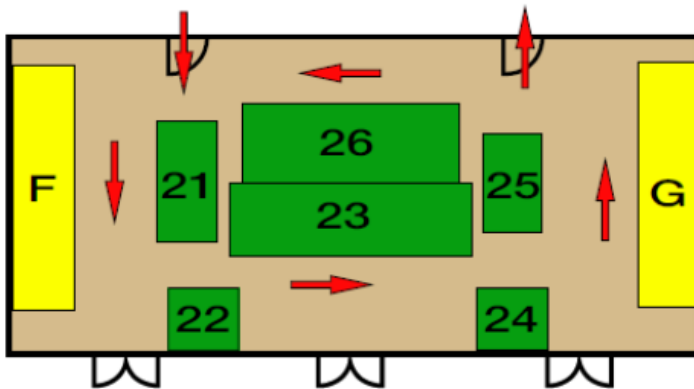
Size – 12ft x 5ft, 00- Gauge

The Stothert & Pitt cranes were built in Bath in 1951, working at Princes Wharf, Bristol up until the 1970's. They were all sold for scrap but had a stay of execution when bought back by the newly formed Bristol Industrial Museum.

In the following years they were restored to full working order and still lift to their maximum weights. The models were made from a range of recycled materials.

The slew rings on the 3 ton cranes starting life as a plastic milk bottle top, and the unique 10 ton cranes slew ring, a marmite jar lid!!

Room 6 and 7



Layouts

- 21. Gamma Silo Rotatory
- 22. The Depot at the End of Time
- 23. Benbridge
- 24. Thomas and Friends
- 25. Sillhurst
- 26. Ditchat Junction

Traders

- F. Bob Jones
- G. Wheels of South Sea

21) Gamma Silo Rotatory,

Owner - Scott Macey

Size - 10ft x 4ft, ON30 - Gauge

O gauge narrow fantasy layout end to end shunting puzzle including a turn table. Unique scratch built engines and rolling stock. With distopian diesel punk theme, Designed to inspire the younger generation to join the model railway hobby from a different perspective. 40k/Necromunda/ Warhammer/Diesel Punk

22) The Depot at the end of time,

Owner - Mark Ayers

Size - 6ft x 5ft, OO - Gauge DCC

A DCC-operated layout set in the fictional welsh TMD of Diwedd Amser which is being run by UNIT to undo sabotage on important railway locomotives across time and space (A layout themed around classic-era Doctor Who)

23) Benbridge,

Owner - East Dorset N Gauge Group

Size 20ft x 3ft (N Gauge)

Benbridge has been built from scratch by club members since 2015, Its based loosely on the Cotswolds, from about 1950 through to modern times. The layout was named after one of the members "Ben" designed and built a bridge so hence the name "Benbridge"

24) Thomas and Friends,

Owner - East Dorset N Gauge Group

Size 3ft x 2ft (N Gauge)

Meet Thomas and his friends, The clubs layout is designed so children can have a go at running, Thomas, Percy or James. You never know what we might have some extra friends running as well.



The background image shows the reception area of CocoCharms Thai Therapy. A receptionist is standing behind a counter, and there are decorative items including a Buddha statue, a peacock, and flowers. The logo 'coco charms' is visible in the top right corner.

CocoCharms Thai Therapy

We have more than 15 years experience in Thai Massage and our qualified masseuses combine traditional Thai massage techniques with western massage styles to give you a bespoke service. At Cococharms we use Organic Coconut Oil for all our treatments, which brings a host of additional benefits through its moisturising and skin nourishing properties, helping to keep your skin healthy.

*For anyone that may be allergic to coconut oil we have alternative oil available.



821 Wimborne Road, Moordown
Winton Bournemouth BH9 2BE

enquiries@cococharmsthaiterapy.co.uk

+441202 922392

Visit Website:

SCAN ME



25) Sillhurst,

Owner - Adrian Scott

Size 8ft x 1ft N Gauge

Sillhurst is a branch line terminus, with a small goods yard, set in Southern England late 50s/early 60s. Motive power steam, diesel and 3rd rail electric.

26) Ditcheat Junction,

Owner - Jeremy Frost

Size 6ft x 2.5ft OO - Gauge

Ditcheat Junction is a fictional location based on the Berks & Hants route between Taunton & Westbury generally operating in the late 2010s and early 2020s.



3 Kings Court, Wimborne, BH21 1HS

01202 883065

www.fishcove.co.uk

Shop Open Tuesdays , Thursday to Sunday

Closed Monday and Wednesday

LickiMat

Cat and Dog Food, Toys,
Treats and more...

Eden
Holistic Pet Foods



FREE RANGE WHOLE BIRD
McAdams
THE WORLD'S FINEST PET FOOD

PAY FOR THE MORTGAGE NOT THE ADVICE

Honesty, integrity and clarity to guide you through the mortgage maze - and not a penny to pay in broker fees

- **Residential** mortgages
- **Re-mortgages**
- **Buy to let** mortgages
- **Let to buy** mortgages
- **Self-build** mortgages
- **Limited company** buy to let



yesmortgageservicesltd

0800 612 55 96

yesmortgageservices.co.uk



Your home/property may be repossessed if you do not keep up repayments on a mortgage or other debt secured on it.

The Financial Conduct Authority does not regulate some forms of Buy to Lets.

YES Mortgage Services Limited is an appointed representative of HIL Partnership Limited, which is authorised and regulated by the Financial Conduct Authority. YES Mortgage Services Limited is a company registered in England and Wales with company number, 08872874. Registered office: The Old Barn, Brooklands Farm, Mannington, Wimborne, Dorset BH21 7JU

Room 8

Layouts

- 11. Llanfair Rhyd
- 12. Sarahs Falls

Trader

C. The Wagon Yard



11) Llanfair Rhyd,

Owner - Aaron Matthews

Size 180cm x 40cm 009 - Gauge

Llanfair Rhyd depicts the upper terminus of a “Ffestiniog” style narrow gauge railway in North Wales. The time frame has been chosen to be loose to allow running as if a preserved railway as well as in late Victorian times. The layout has been designed to run either as DC or DCC and is compatible with Freem009 standards to join up with other layouts.

12) Sarahs Falls,

Owner– East Dorset N Gauge Group

Size: 8ft x 6ft (N Gauge)

This is the club’s “Canadian” layout gifted to the club following the sad death of it’s creator. It had to be split into two halves to remove it from the loft space and so needed some work reconnecting the wiring and checking all is well again. It was on display at our open day in September 2022 and the following weekend at Blandford where it was voted the 3rd best in show by the public.

The layout currently only runs DC stock with the use of selectable isolated tracks providing both a change of movement but plenty to look at. Stock is mainly Canadian but being close to the American border American freight trains will also be seen. During 2023 and into 2024 Sarah’s falls had new back boards put in, adjustments to the track and work on the scenery.

Thank you for visiting us today we look forward to seeing you again soon

**Next years Exhibition will be on
6th and 7th February 2027**



BMRE 2026 BEST IN SHOW

